



DRONE PILOT GUIDE

Quality control - reference measurement

Requirements

- The reference must be fully extended or unfolded
- The reference must be easily recognizable from the air in at least 5 pictures
- The measuring rod should lie on a level surface or on the roof
- Slopes or inclined positions (e.g. entrance to an underground car park) or positioning the reference on the building should be avoided

Example of a 5 m measuring stick



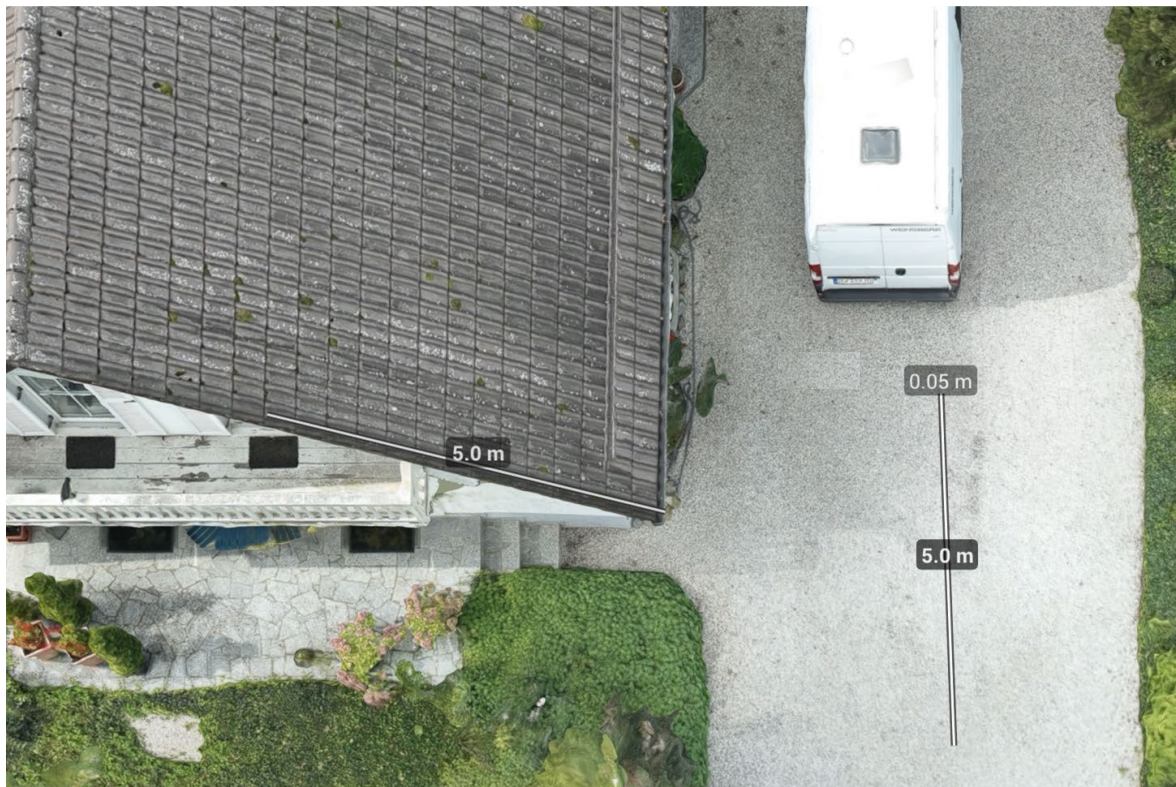
Quality control - reference measurement

1. Select position

Choose a position for the yardstick so that it is not obscured by trees or the building itself. The yardstick must be easily recognizable from the air and on at least 5 pictures. The ideal position is on the roof. If this is not possible, then parallel to a roof edge on the ground if possible.

2. Pay attention to accuracy

Make sure that the reference scale is fully extended or that a folding rule is fully unfolded. This is the only way to ensure that the reference measures a distance of 2 m (folding rule) or 5 m (5 m measuring rod).



Examples of positioning on a roof:



Access to the roof via ladder



Access to the roof via skylight